

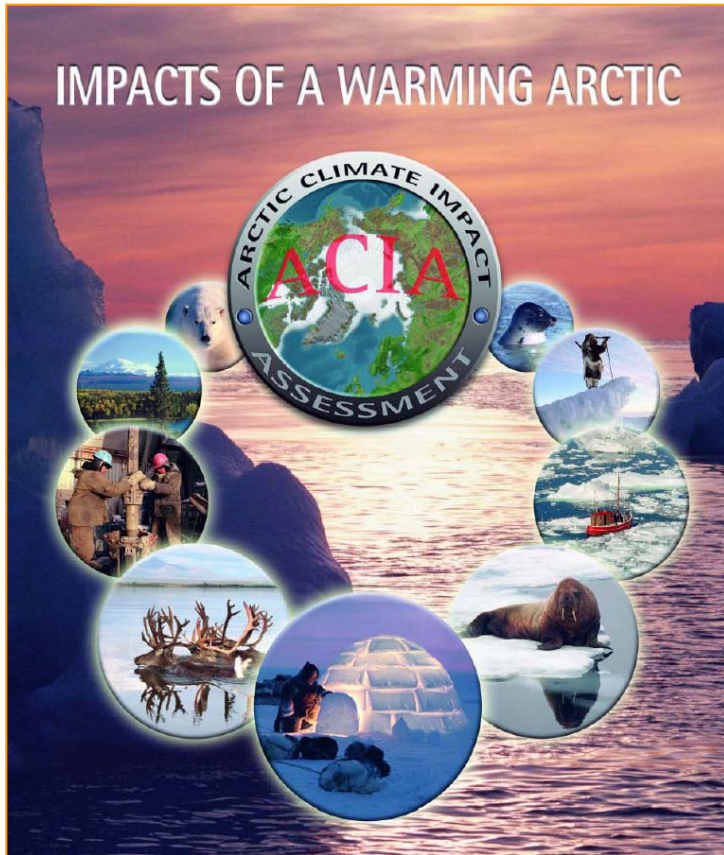
Circumpolar Biodiversity Monitoring Program (CBMP)

*Coordinating for Arctic
Conservation*

Mike Gill (CBMP Chair)
Environment Canada
Whitehorse, Canada



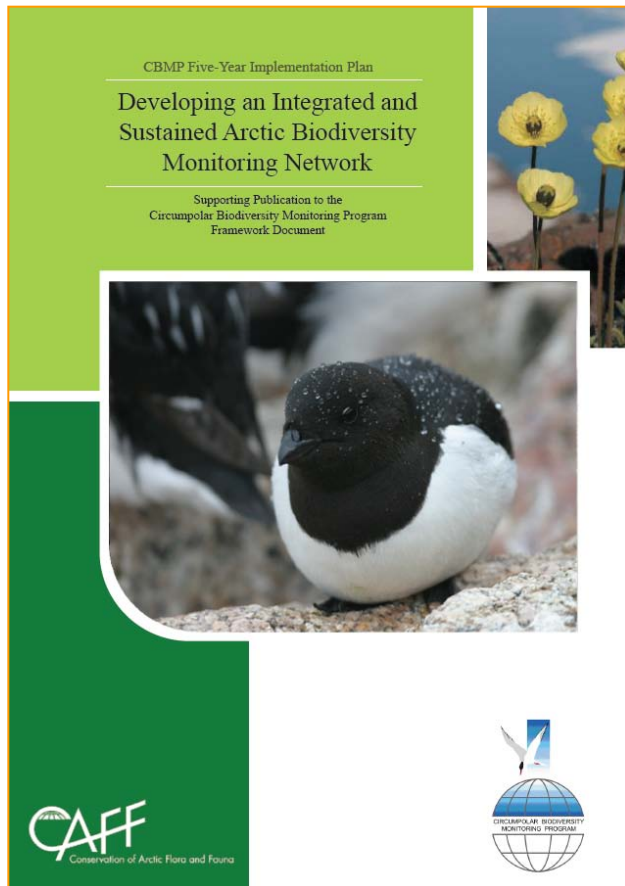
What is the CBMP?



- **Cornerstone program** of Arctic Council CAFF Working Group
- **Response to ACIA:**
“expand and enhance long-term Arctic biodiversity monitoring”
- **International network** improving detection, understanding & reporting of Arctic biodiversity trends
- **Focal point** for current & credible Arctic biodiversity information
- Bridging the **science-policy gap**



Program Status



- Led by **Canada**
 - CBMP Office in Whitehorse
- **Project funding** from multiple sources in Canada, U.S., Norway, Sweden, EC, Netherlands, Finland and Denmark
- **600 members and 60 partner organizations**
- **Year 2** of Five-Year Implementation Plan



Strategic Links

- Arctic Biodiversity Assessment
- Sustaining Arctic Observing Networks
- 2010 Biodiversity Indicators Partnership
- GEO-BON?



Program Areas



- Coordination & Integration of:
 - Arctic Biodiversity Monitoring
 - Data Management
 - Reporting
- Capacity Building
- Communications, Education and Outreach



Overall Approach & Organization



CIRCUMPOLAR BIODIVERSITY MONITORING PROGRAM

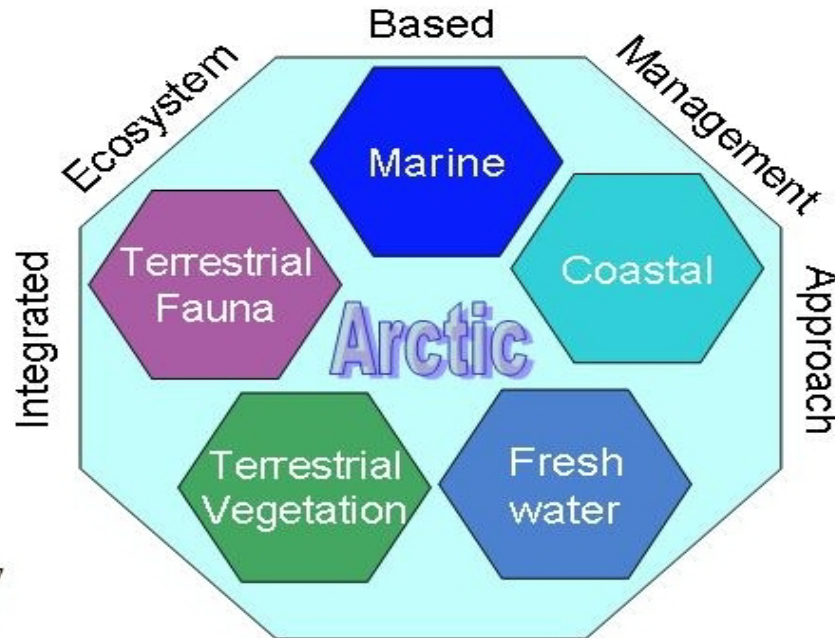
*Methodology Modules
(includes but not limited to)*

Network of Networks

Species and
Habitat
Networks

Site-based
Networks

A-biotic, Extra
Arctic and
Umbrella
Networks



Indicators

Remote
Sensing

Community-
Based
Monitoring

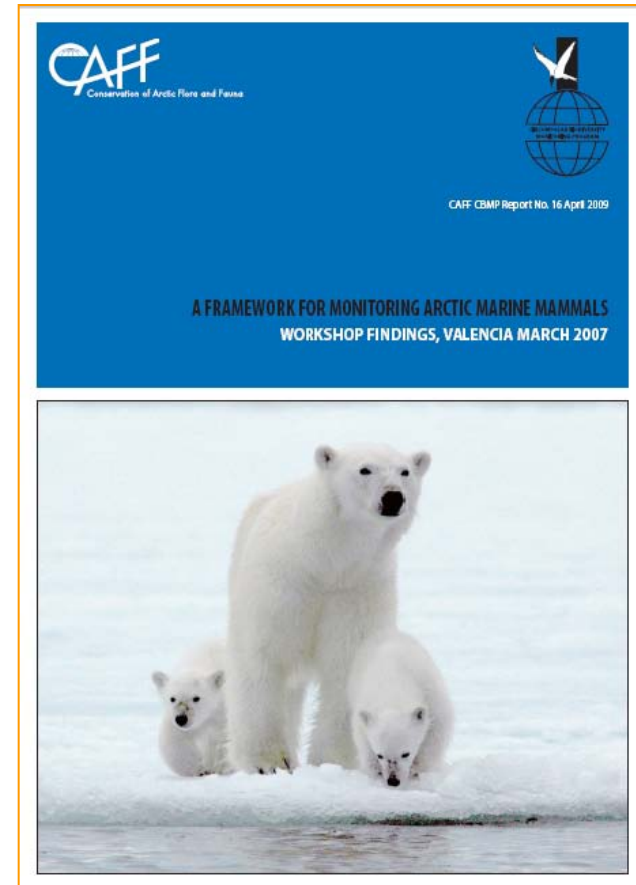
Data Integration and Management

Global, National, Regional and Local
Communications, Education, and Outreach

Information Users
Public, Scientists, Northern Communities,
Decision Makers, etc.

Coordinated Monitoring

- Expert Monitoring Groups (EMGs):
 - **Marine, Coastal, Freshwater, Terrestrial**
 - Ecosystem-based, network of networks
 - Forum for scientists & community experts
 - Pan-Arctic, integrated monitoring plans
- Monitoring Frameworks:
 - Protected Areas, **Marine Mammals, Polar Bears, Seabirds**



Coordinated Reporting

- Arctic Report Cards
- Arctic Biodiversity Assessment
- Expert Monitoring Groups:
 - Cross-discipline scientific publications
 - Regional & Pan-Arctic status and trends reports
- CBMP Biodiversity Indices/Indicators...
 - 6 Indices, 23 Indicators in development
 - Based largely on CBD indicators



Arctic Species Trend Index (ASTI)

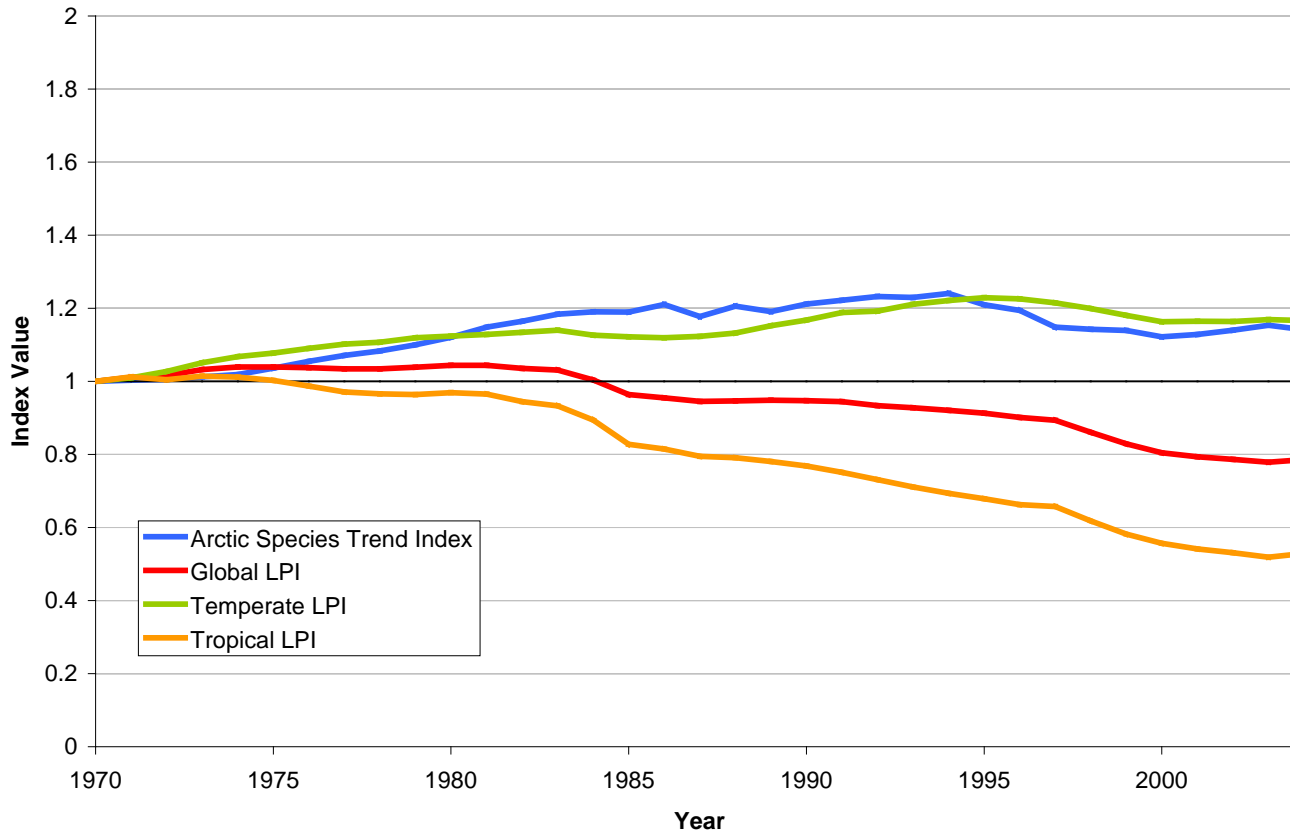
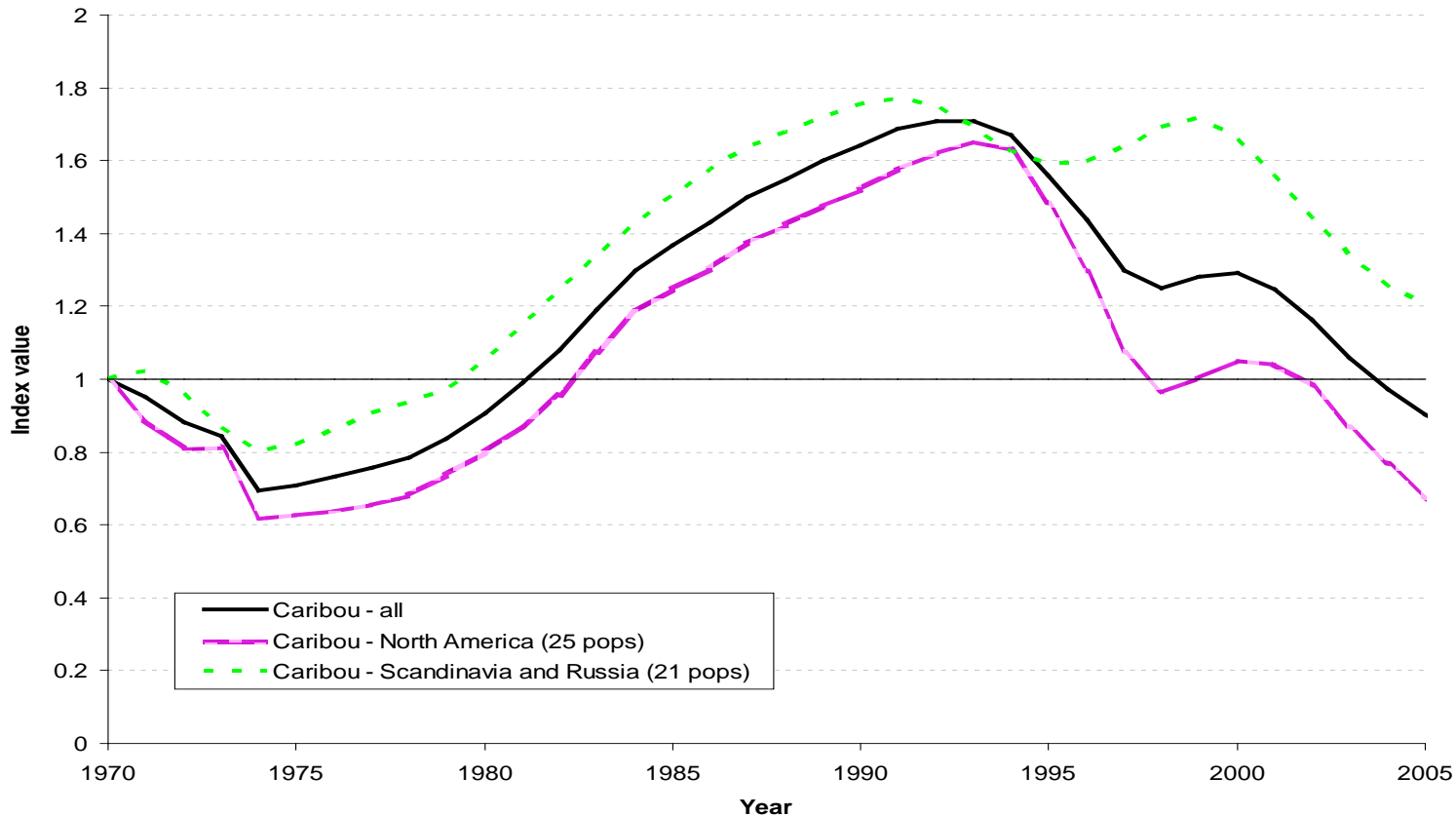


Figure Arctic Species Trend Index (blue) vs. Global (red), temperate (green) and tropical (orange) indices for the period 1970 to 2005.



CIRCUMPOLAR BIODIVERSITY MONITORING PROGRAM

Wild Barren-ground Caribou and Reindeer



Rangifer Index (black line) disaggregated into North American (incl. Greenland) herds (purple) and Eurasian herds (dashed green) for the period 1970-2004.



CBMP & GEO-BON: Points of Connection

- Similar organization & approach
- CBMP is an activated, arctic biodiversity monitoring network (Arctic-BON?)
- Opportunity to align and share:
 - Integrated monitoring approaches
 - Datasets, analyses and reporting (context)
 - Implementation experience
 - Expertise & ideas
 - Product development: RS, data management and modelling approaches





Implementation: What We've Learned

- Build on **existing** monitoring **capacity & information**
- **Start small & maintain focus**
- Keep it **simple** (simple organization)
- Be **Relevant** - Link to reporting mandates
- **Involve managers and funders** in the development
- **Budget for** data management, analysis and reporting
- **Show value** of integration **through results**:
 - Develop early, **targeted products** for policy makers, scientists and the public



Thank-you!



www.cbmp.is